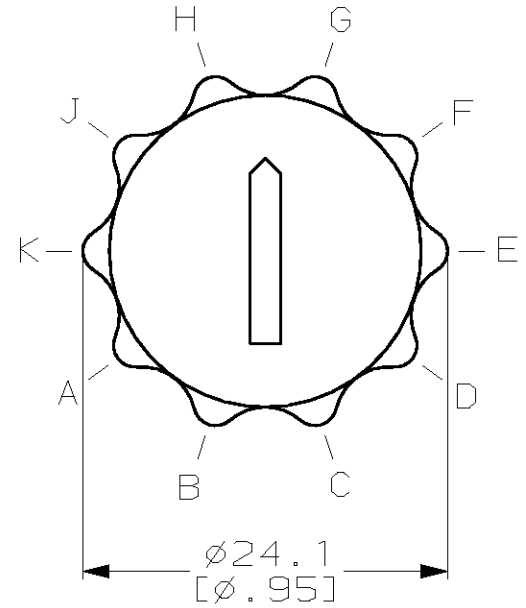
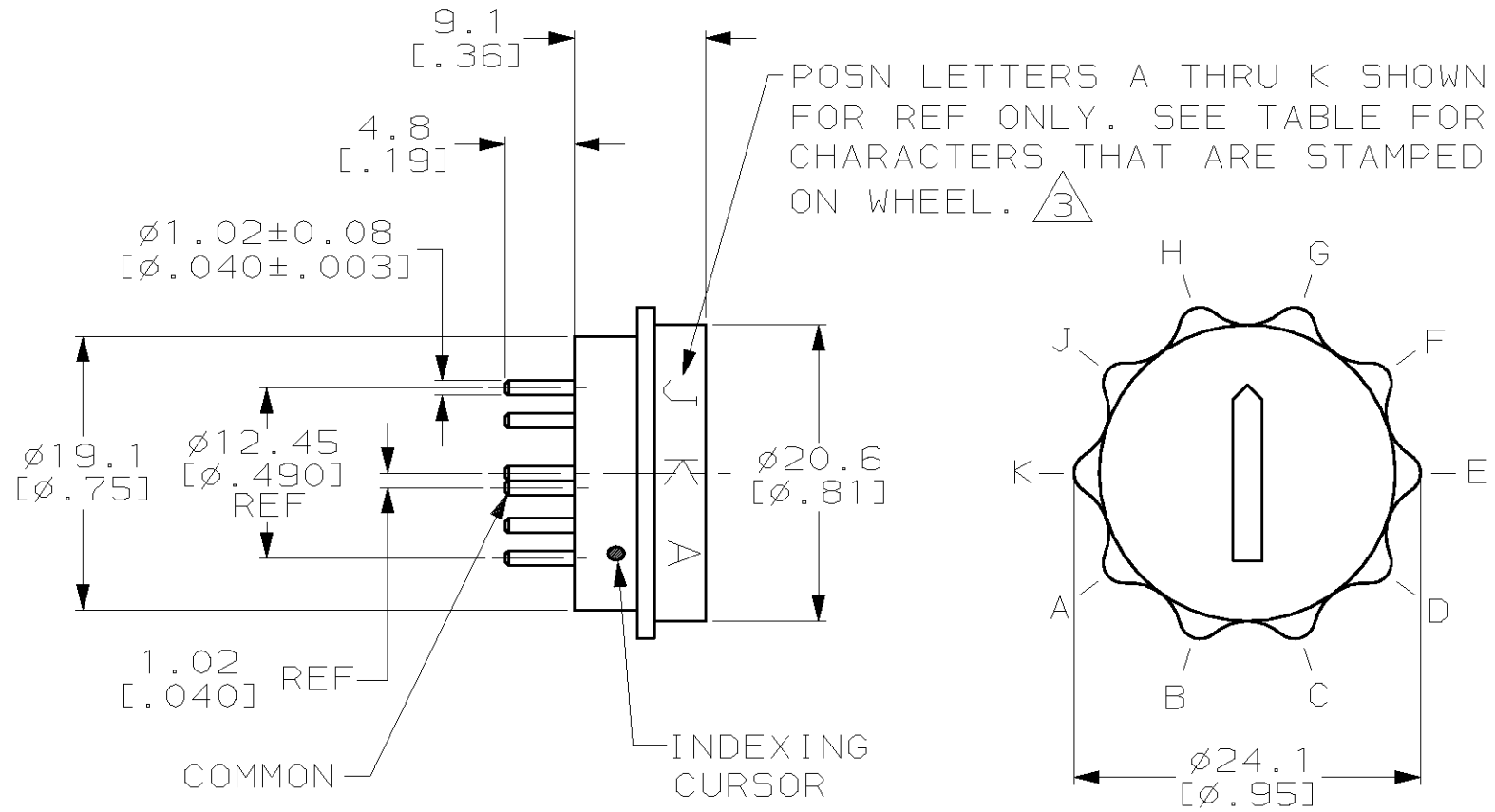


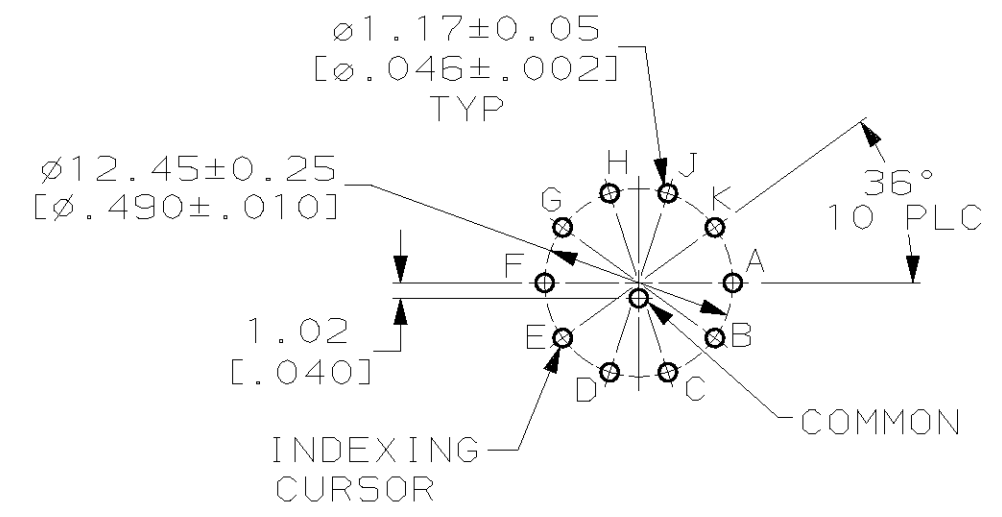
THIS DRAWING IS UNPUBLISHED. RELEASED FOR PUBLICATION, 19 .

© COPYRIGHT 19 BY AMP INCORPORATED. ALL RIGHTS RESERVED.

LOC	DIST	REVISIONS					
FT	69	P	LTR	DESCRIPTION	DATE	DWN	APVD
		U		REV PER 063C-0156-03	130CT04	JR	MZ



- (1) MATERIAL; CASE-THERMOPLASTIC, COLOR NATURAL. WHEEL-THERMOPLASTIC, COLOR BLACK. CONTACT-BRASS.
- (2) FINISH: SOLDER TAILS TIN PLATE 0.0038 [.000150] MIN THK OVER 0.0013 [.000050] MIN THK NICKEL. CONTACT AREA 0.00076 [.000030] MIN. HARD GOLD OVER 0.00127-0.00254 [.000050-.000100] LOW STRESS NICKEL.
- (3) CHARACTERS 2.3 [.09] HIGH, COLOR WHITE.



P.C. BOARD HOLE LAYOUT SWITCH SIDE

POSITION										
1	2	3	4	5	6	7	8	9	10	FOR 435097-2
0	1	2	3	4	5	6	7	8	9	FOR 435097-1

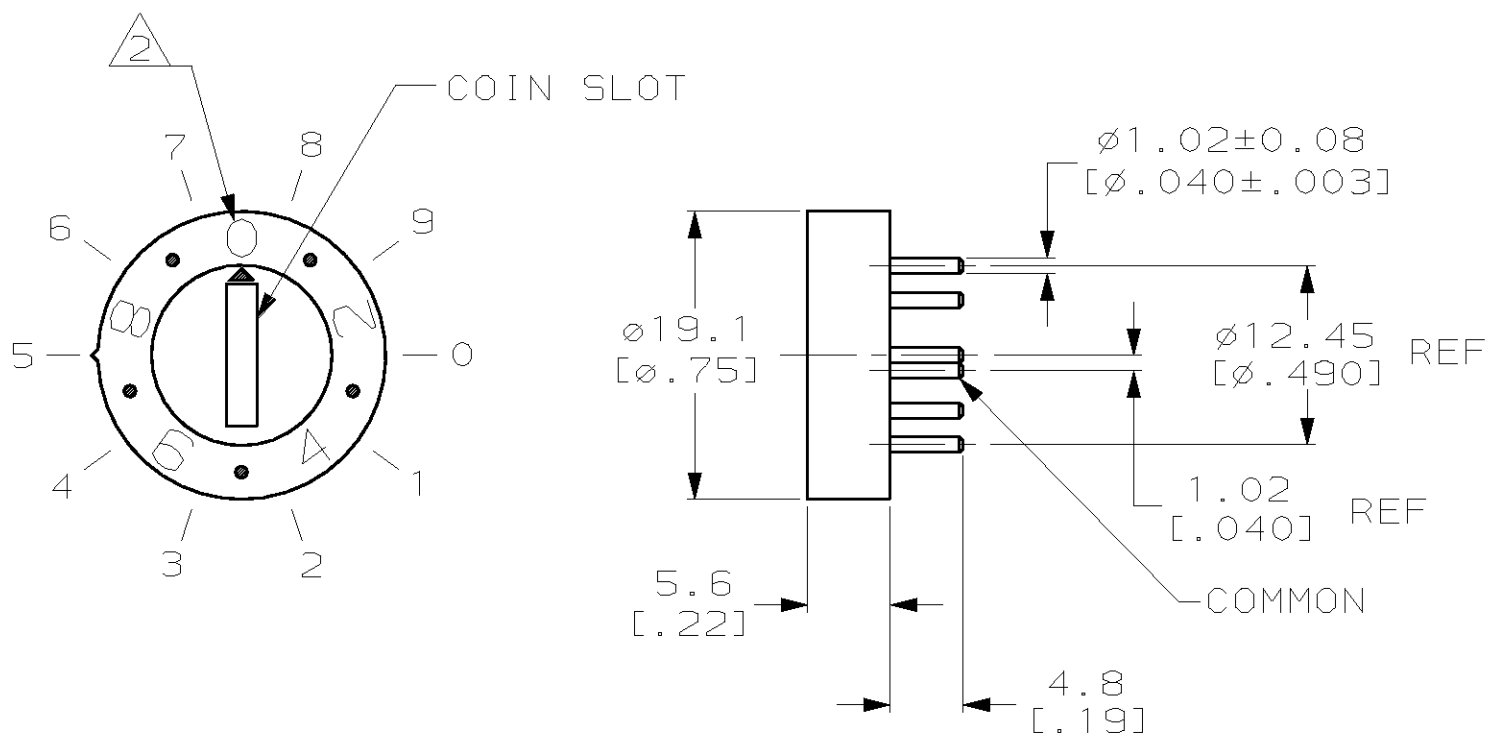
COMMON TO	0	●								
	1		●							
	2			●						
	3				●					
	4					●				
	5						●			
	6							●		
	7								●	
	8									●
	9									

10	9	8	7	6	5	4	3	2	1	435097-2
9	8	7	6	5	4	3	2	1	0	435097-1
K	J	H	G	F	E	D	C	B	A	PART NO
WHEEL POSN CHARACTERS										

THIS DRAWING IS A CONTROLLED DOCUMENT.		DWN J. McCLINTON 11-20-80	AMP AMP Incorporated Harrisburg, PA 17105-3608
DIMENSIONS: mm [INCHES]		CHK R. JARRETT 12-1-80	
TOLERANCES UNLESS OTHERWISE SPECIFIED:		APVD D.W. RUPNIK 7-16-81	NAME ROTARY SWITCH ASSY 10 POSN, 6000 SERIES DECIMAL
0 PLC ±- 1 PLC ±- 2 PLC ±0.5 [.02] 3 PLC ±- 4 PLC ±- ANGLES ±0°30'		PRODUCT SPEC 108-7514	
MATERIAL (1)		APPLIC. SPEC 114-7005	SIZE A3
FINISH (2)		WEIGHT -	CAGE CODE 00779
		CUSTOMER DRAWING	DRAWING NO C- 435097
		SCALE 2:1	RESTRICTED TO -
		SHEET 1 OF 3	REV U

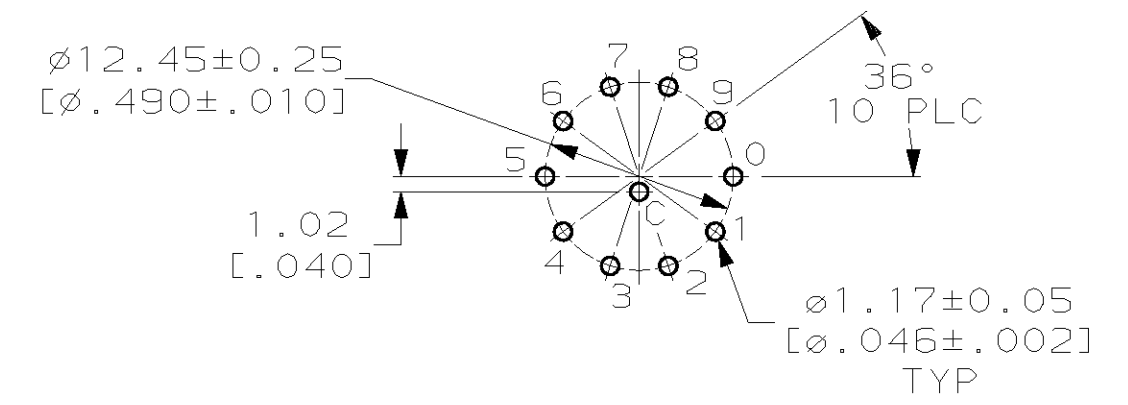
THIS DRAWING IS UNPUBLISHED. RELEASED FOR PUBLICATION ,19 .
 © COPYRIGHT 19 BY AMP INCORPORATED. ALL RIGHTS RESERVED.

LOC	DIST	REVISIONS					
FT	69	P	LTR	DESCRIPTION	DATE	DWN	APVD
		U		SEE SHEET 1	-	-	-



① FINISH: SOLDER TAILS TIN PLATE 0.0038 [.000150] MIN THK OVER 0.0013 [.000050] MIN THK NICKEL. CONTACT AREA 0.00076 [.000030] MIN. HARD GOLD OVER 0.00127-0.00254 [.000050-.000100] LOW STRESS NICKEL.

② CHARACTERS 2.5 [.10] HIGH, COLOR BLACK.



P.C. BOARD HOLE LAYOUT
SWITCH SIDE

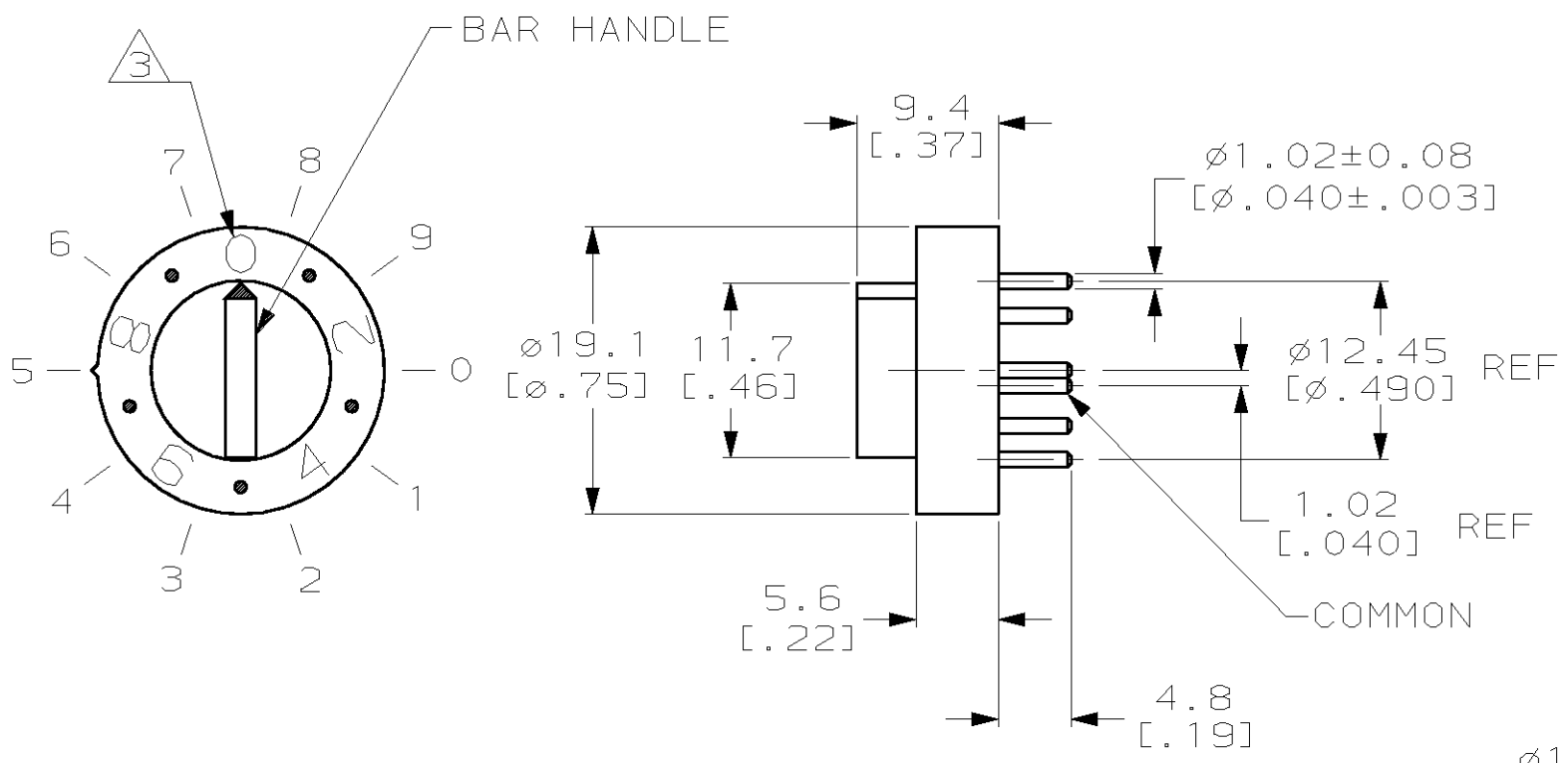
	POSITION									
	0	1	2	3	4	5	6	7	8	9
COMMON TO	0	●								
	1		●							
	2			●						
	3				●					
	4					●				
	5						●			
	6							●		
	7								●	
	8									●
	9									

1-435097-1
PART NO

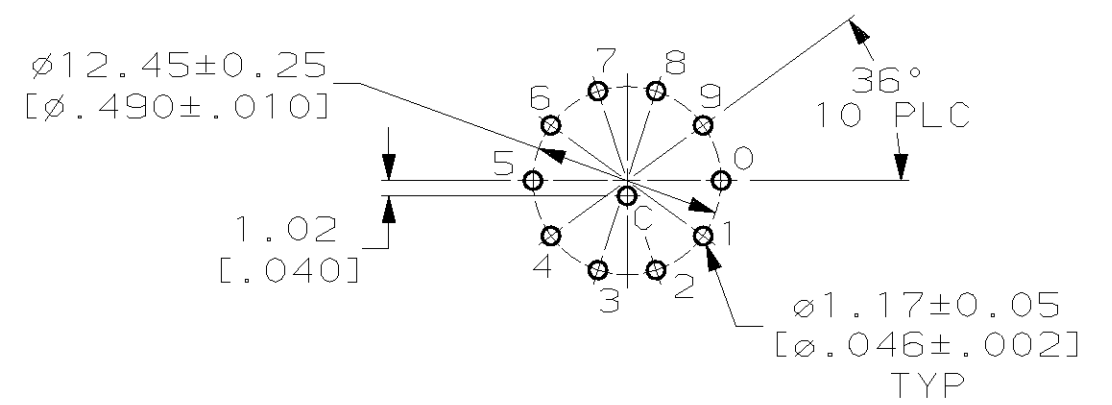
THIS DRAWING IS A CONTROLLED DOCUMENT.		DWN R. TALLEY 8-7-91	AMP AMP Incorporated Harrisburg, PA 17105-3608	
DIMENSIONS: mm [INCHES]		CHK R. MILLER 8-7-91		
TOLERANCES UNLESS OTHERWISE SPECIFIED:		APVD D. HUFFMAN 8-9-91	NAME ROTARY SWITCH ASSY, 10 POSN, 6000 SERIES DECIMAL	
0 PLC ±-		PRODUCT SPEC 108-7514	SIZE	
1 PLC ±-		APPLICATION SPEC 114-7005	CAGE CODE	
2 PLC ±0.5 [.02]		WEIGHT -	DRAWING NO A3 00779 C- 435097	
3 PLC ±-		CUSTOMER DRAWING	RESTRICTED TO -	
4 PLC ±-			SCALE 2:1	
ANGLES ±0°30'		SHEET 2 OF 3		REV U
MATERIAL CASE: THERMOPLASTIC, COLOR NATURAL CONTACT: BRASS	FINISH ①			

THIS DRAWING IS UNPUBLISHED. RELEASED FOR PUBLICATION, 19 .
 © COPYRIGHT 19 BY AMP INCORPORATED. ALL RIGHTS RESERVED.

LOC	DIST	REVISIONS					
FT	69	P	LTR	DESCRIPTION	DATE	DWN	APVD
		U		SEE SHEET 1	-	-	-



- ① FINISH: SOLDERTAILS TIN PLATE 0.0038 [.000150] MIN THK OVER 0.0013 [.000050] MIN THK NICKEL. CONTACT AREA 0.00076 [.000030] MIN. HARD GOLD OVER 0.00127-0.00254 [.000050-.000100] LOW STRESS NICKEL.
- ② FINISH: SOLDERTAILS TIN PLATE 0.0038 [.000150] MIN THK OVER 0.0051 [.000200] MIN THK COPPER. CONTACT AREA 0.00076 [.000030] MIN. HARD GOLD OVER 0.00127-0.00254 [.000050-.000100] LOW STRESS NICKEL.
- ③ CHARACTERS 2.5 [.10] HIGH, COLOR BLACK.



		POSITION									
		0	1	2	3	4	5	6	7	8	9
COMMON TO	0	●									
	1		●								
	2			●							
	3				●						
	4					●					
	5						●				
	6							●			
	7								●		
	8									●	
	9										●

P.C. BOARD HOLE LAYOUT SWITCH SIDE

SUPERSEDED BY 2-435097-1 ② 2-435097-3
① 2-435097-1

THIS DRAWING IS A CONTROLLED DOCUMENT.		DWN R. TALLEY 8-7-91	AMP Incorporated Harrisburg, PA 17105-3608	
DIMENSIONS: mm [INCHES]		CHK R. MILLER 8-7-91		
TOLERANCES UNLESS OTHERWISE SPECIFIED:		APVD D. HUFFMAN 8-9-91	NAME ROTARY SWITCH ASSY, 10 POSN, 6000 SERIES DECIMAL	
0 PLC ±- 1 PLC ±- 2 PLC ±0.5 [.02] 3 PLC ±- 4 PLC ±- ANGLES ±0°30'		PRODUCT SPEC 108-7514	DRAWING NO C-435097	
MATERIAL CASE: THERMOPLASTIC, COLOR NATURAL CONTACT: BRASS		FINISH SEE TABLE	APPLICATION SPEC 114-7005	RESTRICTED TO -
		WEIGHT -	SIZE A3	CAGE CODE 00779
		CUSTOMER DRAWING	SCALE 2:1	SHEET 3 OF 3
				REV U